

South Caucasus Pipeline Expansion Project, Azerbaijan Environmental and Social Impact Assessment

South Caucasus Pipeline Company

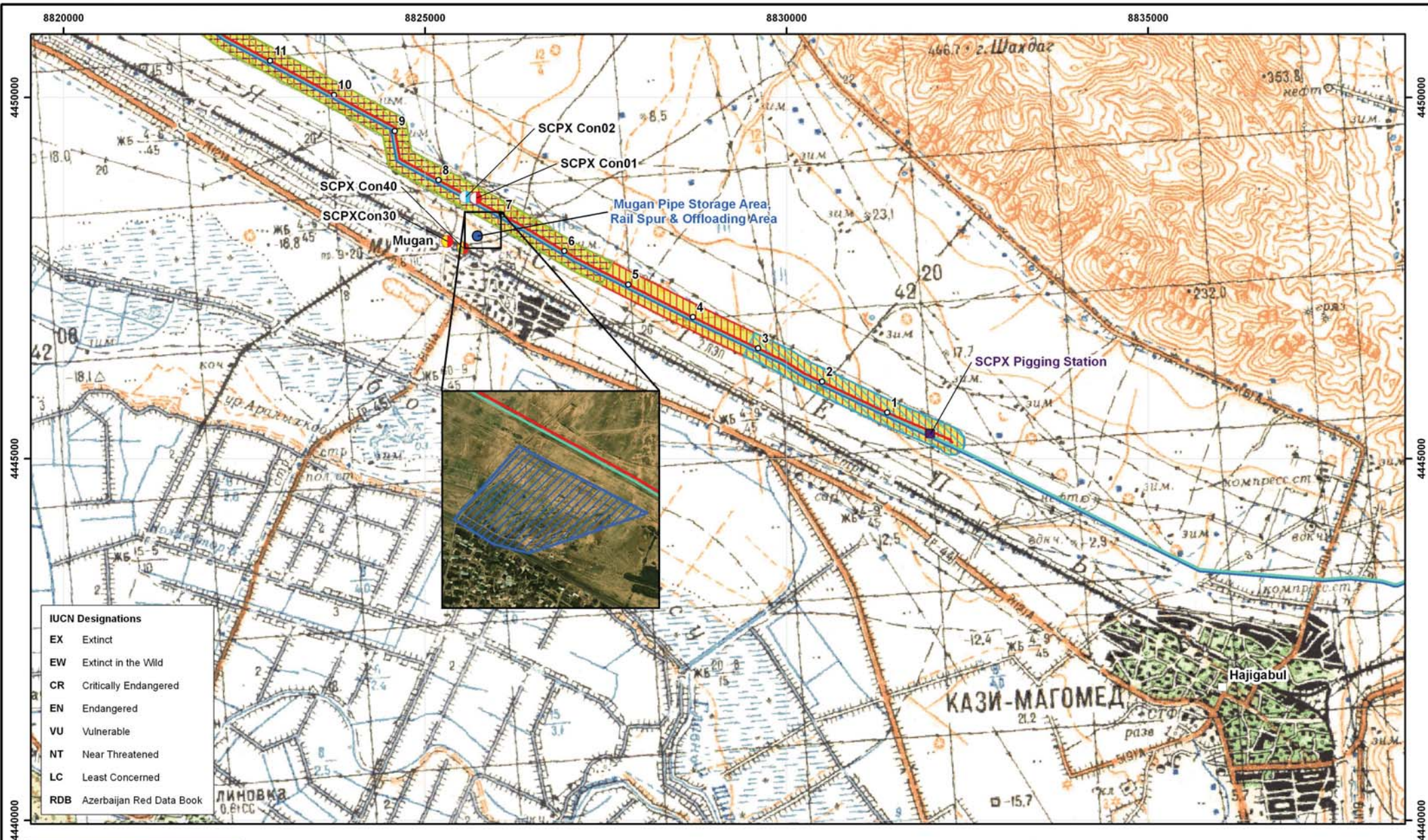
JUNE 2013



For further information, please contact:

BP Azerbaijan
Xazar Centre North Tower, 153 Neftchiler Avenue, Baku AZ1010
Tel: +99 412 497 90 00 Email: scpxaz@bp.com





IUCN Designations

EX	Extinct
EW	Extinct in the Wild
CR	Critically Endangered
EN	Endangered
VU	Vulnerable
NT	Near Threatened
LC	Least Concerned
RDB	Azerbaijan Red Data Book

Rev	Date	Comment	By	CH	AP
03	09/05/2013	Route & camps updated	AJ	TN	KC
02	13/12/2012	RDB updated	AJ	TN	KC
01	13/07/2012	Key updated	AJ	TN	KC

Legend

Indicative SCPX Route	SCPX Pigging Station	Asbestos	2011 Fauna Survey	Potential Cumulative Impact
SCP Route	SCP Block Valve	Hydrocarbon	2011 Flora Survey	Potential Location of <i>Iris acutibola</i>
BTC Route	BTC Pump Station	Municipal	BTC Fauna Survey	Protected Area
Country Boundary	River Crossing	Other Contaminant	Non-agricultural Land	Sensitive Habitat (<i>Salsola</i> nodulosa Desert)
Temporary Facility Area	River Crossing Sensitive to Erosion	Garayazi Aquifer	Agricultural Land	Sensitive Habitat (Species-Rich Semi-Desert & Scrub)
SCPX KP	Open Cut Crossing		Location of <i>Iris camilleae</i>	Sensitive Habitat (Species-Rich Semi-Desert)
Settlement	Proposed Microtunnel Crossing			Sensitive Habitat (Ephemereum Desert)
SCPX Block Valve	Proposed Horizontal Directional Drill (HDD) Crossing			

Scale

Original A3 Plot Scale 1:50,000

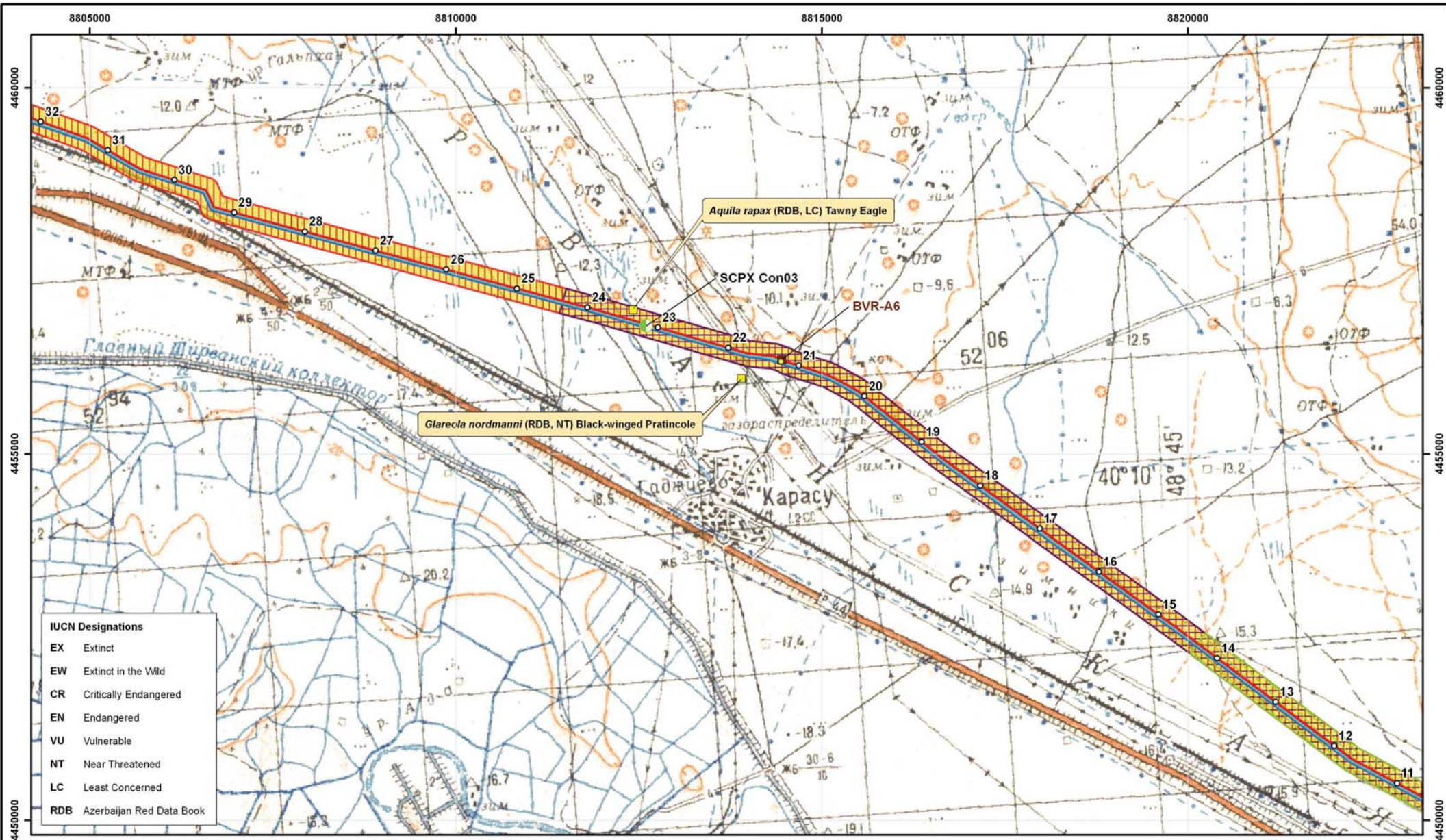
0 1 2 km

North Arrow

Projection Information:
 ELLIPSOID: KRASSOVSKY 1940
 PROJEKTION: GAUSS-KRUGER
 GEODETIC DATUM: POLKOVNIKOV 1942, ZONE 8
 VERTICAL COORDINATE SYSTEM: KRONSTADT (BALTIC SEA) DATUM

SCPX Project Azerbaijan

Figure A7-1: Environmental Constraints Map 1 of 22



IUCN Designations

- EX Extinct
- EW Extinct in the Wild
- CR Critically Endangered
- EN Endangered
- VU Vulnerable
- NT Near Threatened
- LC Least Concerned
- RDB Azerbaijan Red Data Book



Rev	Date	Comment	By	CH	AP
03	09/05/2013	Route & camps updated	AJ	TN	KC
02	13/12/2012	RDB updated	AJ	TN	KC
01	13/07/2012	Key updated	AJ	TN	KC

Legend		Contamination	Ecology	Potential Cumulative Impact
—	Indicative SCPX Route	Asbestos	2011 Fauna Survey	Potential Location of <i>Iris acutibola</i>
—	SCP Route	Hydrocarbon	2011 Flora Survey	Protected Area
—	BTC Route	Municipal	BTC Fauna Survey	Sensitive Habitat (Salsotetum nodulosae Desert)
—	Country Boundary	Other Contaminant	Non-agricultural Land	Sensitive Habitat (Species-Rich Semi-Desert & Scrub)
●	Temporary Facility Area	Garayazi Aquifer	Agricultural Land	Sensitive Habitat (Species-Rich Semi-Desert)
○	SCPX KP		Location of <i>Iris camillae</i>	Sensitive Habitat (Ephemeretum Desert)
□	Settlement			
■	SCPX Block Valve			
■	SCPX Piggling Station			
●	SCP Block Valve			
■	BTC Pump Station			
●	River Crossing			
●	River Crossing Sensitive to Erosion			
□	Open Cut Crossing			
□	Proposed Microtunnel Crossing			
□	Proposed Horizontal Directional Drill (HDD) Crossing			

Original A3 Plot Scale 1:50,000

ELLIPOID: KRASSOVSKY 1940
 PROJECTION: GAUSS-KRUGER
 GEODETIC DATUM: POLKOVNIKOV 1942 ZONE 8
 VERTICAL COORDINATE SYSTEM: KRONSTADT (BALTIC SEA) DATUM

SCPX Project Azerbaijan

Figure A7-1:
 Environmental Constraints
 Map 2 of 22

8790000

8795000

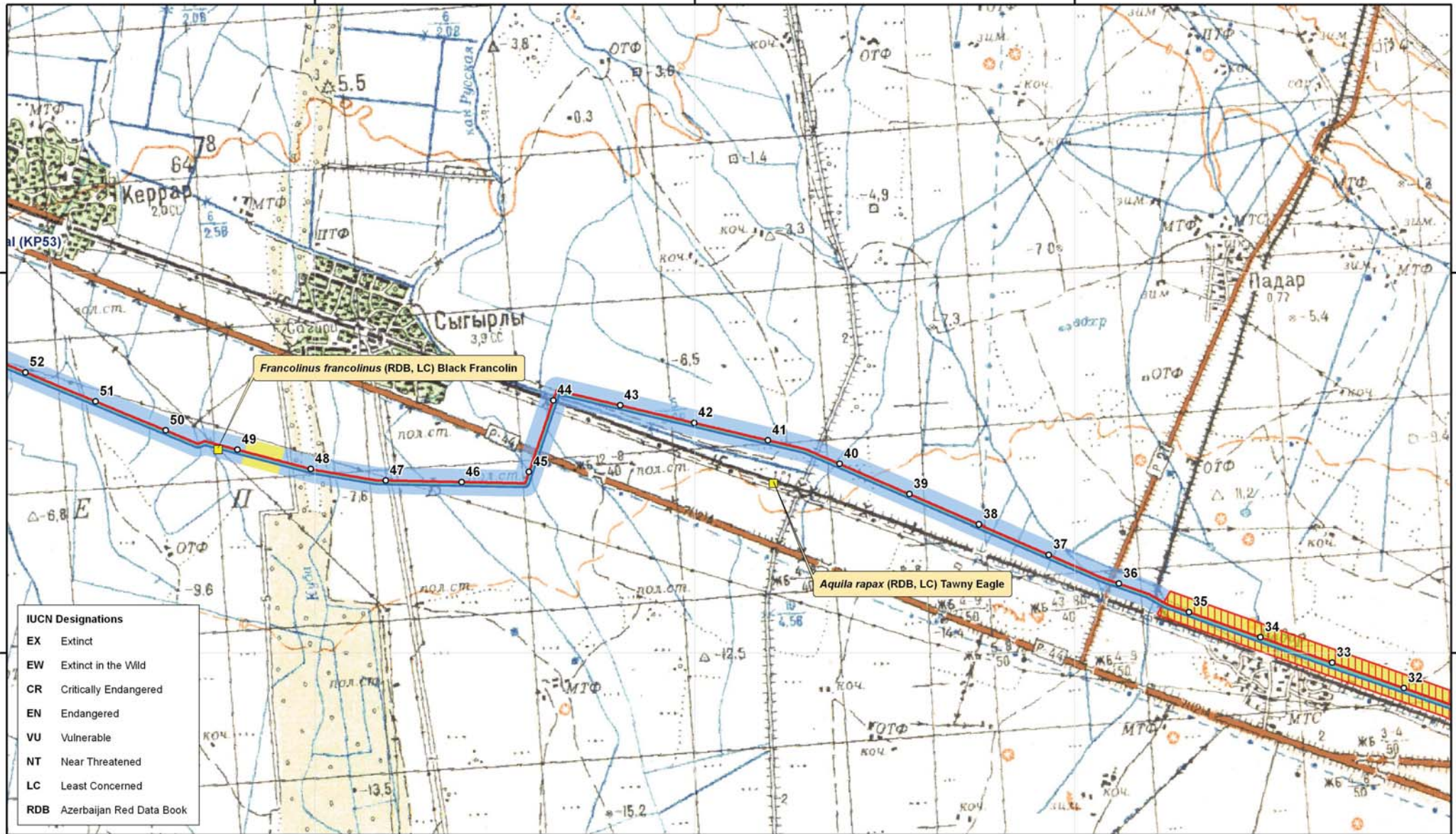
8800000

4465000

4460000

4465000

4460000



IUCN Designations

EX	Extinct
EW	Extinct in the Wild
CR	Critically Endangered
EN	Endangered
VU	Vulnerable
NT	Near Threatened
LC	Least Concerned
RDB	Azerbaijan Red Data Book



03	09/05/2013	Route & camps updated	AJ	TN	KC
02	13/12/2012	RDB updated	AJ	TN	KC
01	13/07/2012	Key updated	AJ	TN	KC
Rev	Date	Comment	By	CH	AP

Legend

Indicative SCPX Route	SCPX Piggling Station	Asbestos	2011 Fauna Survey	Potential Cumulative Impact
SCP Route	SCP Block Valve	Hydrocarbon	2011 Flora Survey	Potential Location of Iris acutibola
BTC Route	BTC Pump Station	Municipal	BTC Fauna Survey	Protected Area
Country Boundary	River Crossing	Other Contaminant	Non-agricultural Land	Sensitive Habitat (Salsotetum nodulosae Desert)
Temporary Facility Area	River Crossing Sensitive to Erosion	Garayazi Aquifer	Agricultural Land	Sensitive Habitat (Species-Rich Semi-Desert & Scrub)
SCPX KP	Open Cut Crossing		Location of Iris camilleae	Sensitive Habitat (Species-Rich Semi-Desert)
Settlement	Proposed Microtunnel Crossing			Sensitive Habitat (Ephemeretum Desert)
SCPX Block Valve	Proposed Horizontal Directional Drill (HDD) Crossing			



Original A3 Plot Scale	0	1	2 km
1:50,000			

ELLIPSOID: KRASSOVSKY 1940
 PROJECTION: GAUSS-KRUGER
 GEODETIC DATUM: POLKOVNOV 1942 ZONE 8
 VERTICAL COORDINATE SYSTEM: KRONSTADT (BALTIC SEA) DATUM

SCPX Project Azerbaijan

Figure A7-1:
 Environmental Constraints
 Map 3 of 22

8770000

8775000

8780000

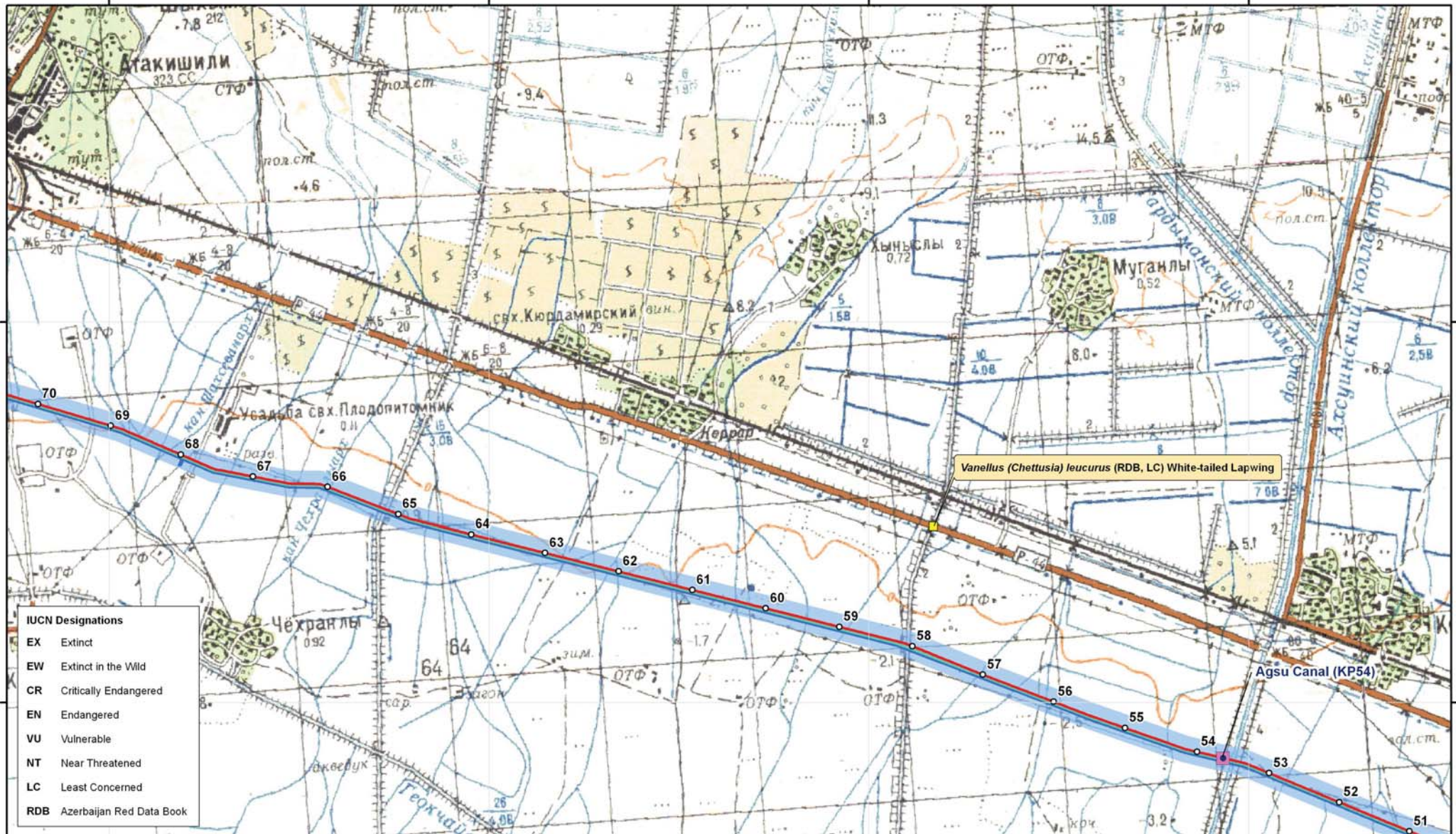
8785000

4470000

4465000

4470000

4465000



IUCN Designations

EX	Extinct
EW	Extinct in the Wild
CR	Critically Endangered
EN	Endangered
VU	Vulnerable
NT	Near Threatened
LC	Least Concerned
RDB	Azerbaijan Red Data Book

03	09/05/2013	Route & camps updated	AJ	TN	KC
02	13/12/2012	RDB updated	AJ	TN	KC
01	13/07/2012	Key updated	AJ	TN	KC
Rev	Date	Comment	By	CH	AP

Legend

Indicative SCPX Route	SCPX Piggling Station	Asbestos	2011 Fauna Survey	Potential Cumulative Impact
SCP Route	SCP Block Valve	Hydrocarbon	2011 Flora Survey	Potential Location of Iris acutibola
BTC Route	BTC Pump Station	Municipal	BTC Fauna Survey	Protected Area
Country Boundary	River Crossing	Other Contaminant	Non-agricultural Land	Sensitive Habitat (Salsotetum nodulosae Desert)
Temporary Facility Area	River Crossing Sensitive to Erosion	Garayazi Aquifer	Agricultural Land	Sensitive Habitat (Species-Rich Semi-Desert & Scrub)
SCPX KP	Open Cut Crossing		Location of Iris camillae	Sensitive Habitat (Species-Rich Semi-Desert)
Settlement	Proposed Microtunnel Crossing			Sensitive Habitat (Ephemeretum Desert)
SCPX Block Valve	Proposed Horizontal Directional Drill (HDD) Crossing			

Scale and Orientation

Original A3 Plot Scale 1:50,000

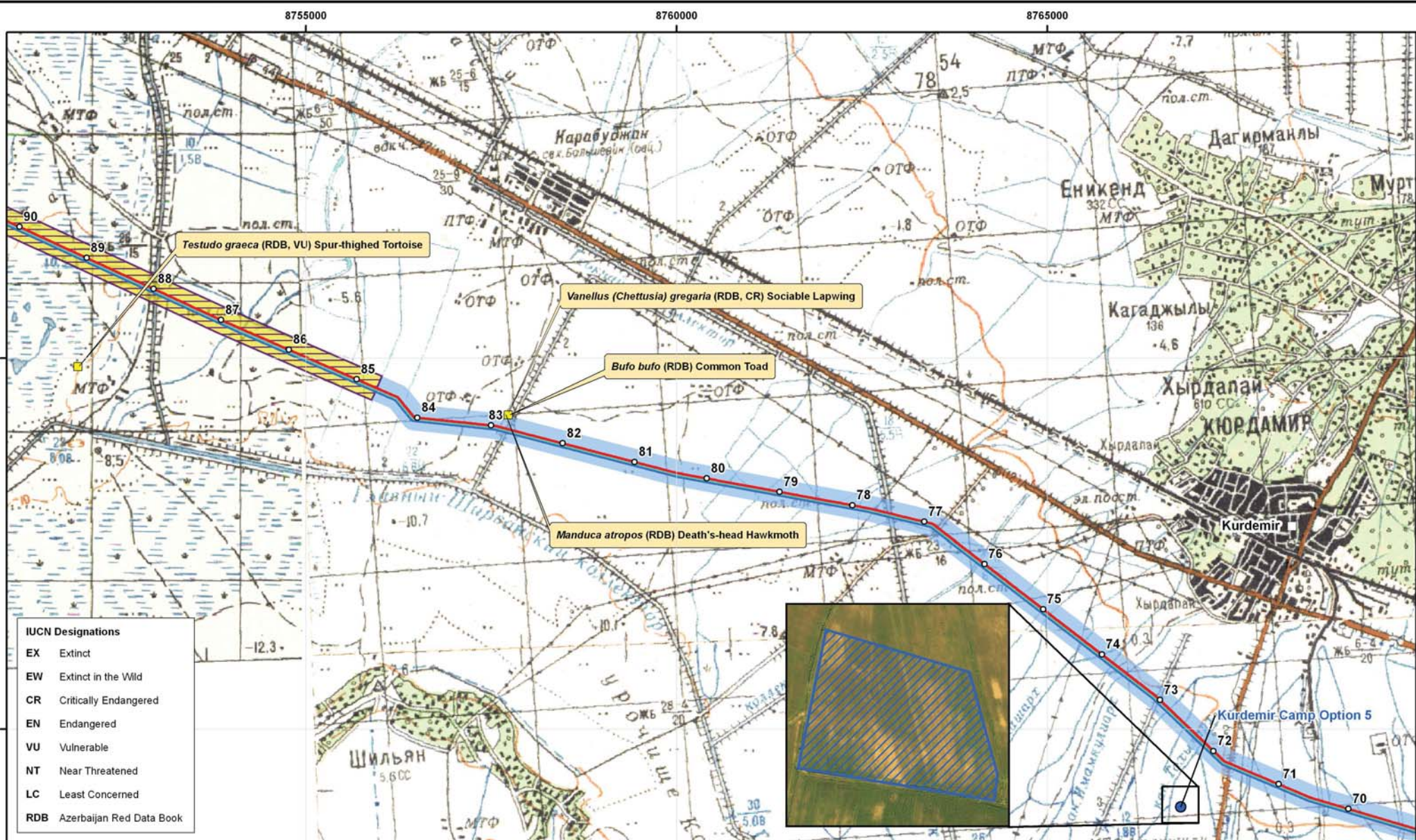
0 1 2 km

North Arrow

SCPX Project Azerbaijan

Figure A7-1:
Environmental Constraints
Map 4 of 22

ELLIPSOID: KRASSOVSKY 1940
PROJECTION: GAUSS-KRUGER
GEODETIC DATUM: POLKOVNIKOV 1942 ZONE 8
VERTICAL COORDINATE SYSTEM: KRONSTADT (BALTIC SEA) DATUM



IUCN Designations

EX	Extinct
EW	Extinct in the Wild
CR	Critically Endangered
EN	Endangered
VU	Vulnerable
NT	Near Threatened
LC	Least Concerned
RDB	Azerbaijan Red Data Book

Rev	Date	Comment	By	CH	AP
03	09/05/2013	Route & camps updated	AJ	TN	KC
02	13/12/2012	RDB updated	AJ	TN	KC
01	13/07/2012	Key updated	AJ	TN	KC

Legend

Indicative SCPX Route	SCPX Piggling Station	Contamination: Asbestos	Ecology: 2011 Fauna Survey	Potential Cumulative Impact
SCP Route	SCP Block Valve	Contamination: Hydrocarbon	Ecology: 2011 Flora Survey	Potential Location of Iris acutibola
BTC Route	BTC Pump Station	Contamination: Municipal	Ecology: BTC Fauna Survey	Protected Area
Country Boundary	River Crossing	Contamination: Other Contaminant	Ecology: Non-agricultural Land	Sensitive Habitat (Salsotetum nodulosae Desert)
Temporary Facility Area	River Crossing Sensitive to Erosion	Contamination: Garayazi Aquifer	Ecology: Agricultural Land	Sensitive Habitat (Species-Rich Semi-Desert & Scrub)
SCPX KP	Open Cut Crossing		Ecology: Location of Iris camillae	Sensitive Habitat (Species-Rich Semi-Desert)
Settlement	Proposed Microtunnel Crossing			Sensitive Habitat (Ephemereum Desert)
SCPX Block Valve	Proposed Horizontal Directional Drill (HDD) Crossing			

Original A3 Plot Scale 1:50,000

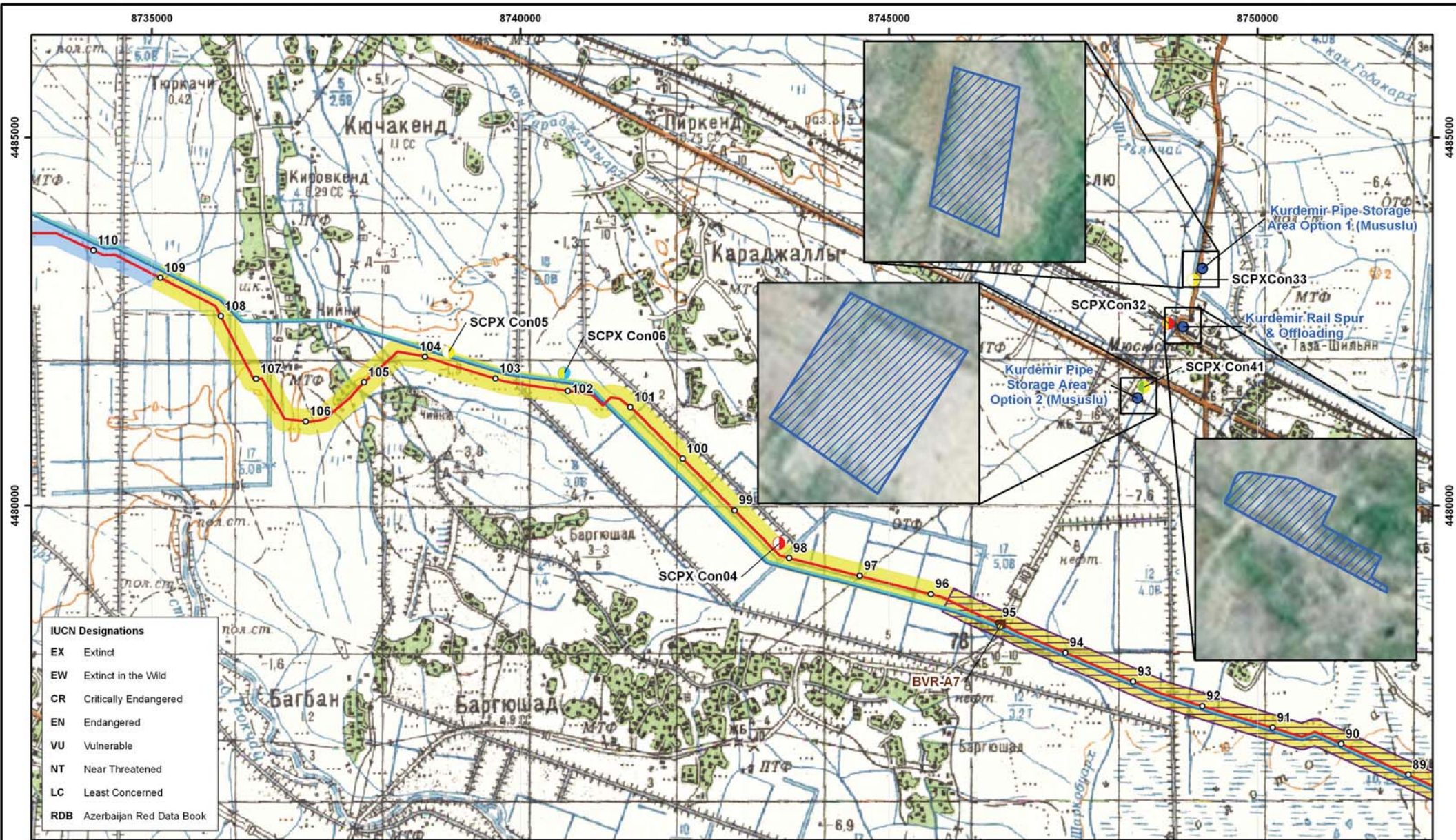
W N E

 S

SCPX Project Azerbaijan

Figure A7-1:
Environmental Constraints
Map 5 of 22

ELLIPSOID: KRASSOVSKY 1940
 PROJECTION: GAUSS-KRUGER
 GEODETIC DATUM: POLKOVNOV 1942, ZONE 8
 VERTICAL COORDINATE SYSTEM: KRONSTADT (BALTIC SEA) DATUM



IUCN Designations

EX	Extinct
EW	Extinct in the Wild
CR	Critically Endangered
EN	Endangered
VU	Vulnerable
NT	Near Threatened
LC	Least Concerned
RDB	Azerbaijan Red Data Book

Rev	Date	Comment	By	CH	AP
03	09/05/2013	Route & camps updated	AJ	TN	KC
02	13/12/2012	RDB updated	AJ	TN	KC
01	13/07/2012	Key updated	AJ	TN	KC

Legend		Contamination	Ecology	Potential Cumulative Impact
	Indicative SCPX Route			
	SCP Route			
	BTC Route			
	Country Boundary			
	Temporary Facility Area			
	SCPX KP			
	Settlement			
	SCPX Block Valve			
	SCPX Piggling Station			
	SCP Block Valve			
	BTC Pump Station			
	River Crossing			
	River Crossing Sensitive to Erosion			
	Open Cut Crossing			
	Proposed Microtunnel Crossing			
	Proposed Horizontal Directional Drill (HDD) Crossing			
	Garayazi Aquifer			
	Asbestos			
	Hydrocarbon			
	Municipal			
	Other Contaminant			
	Garayazi Aquifer			
	2011 Fauna Survey			
	2011 Flora Survey			
	BTC Fauna Survey			
	Non-agricultural Land			
	Agricultural Land			
	Location of Iris camillae			
	Potential Location of Iris acutibola			
	Protected Area			
	Sensitive Habitat (Salsolatum nodulosae Desert)			
	Sensitive Habitat (Species-Rich Semi-Desert & Scrub)			
	Sensitive Habitat (Species-Rich Semi-Desert)			
	Sensitive Habitat (Ephemereum Desert)			

Original A3 Plot Scale 1:50,000

SCPX Project Azerbaijan

Figure A7-1:
Environmental Constraints
Map 6 of 22

ELLIPSOID: KRASSOVSKY 1940
 PROJECTION: GAUSS-KRUGER
 GEODETIC DATUM: POLKOVNOV 1942 ZONE 8
 VERTICAL COORDINATE SYSTEM: KRONSTADT (BALTIC SEA) DATUM