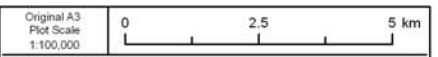


Rev	Date	Comment	By	CH	AP
02	02/05/2013	Route and camps updated	AJ	TN	KC
01	12/07/2012	Key updated	AJ	TN	KC
00	27/09/2012	First Draft	AJ	TN	KC

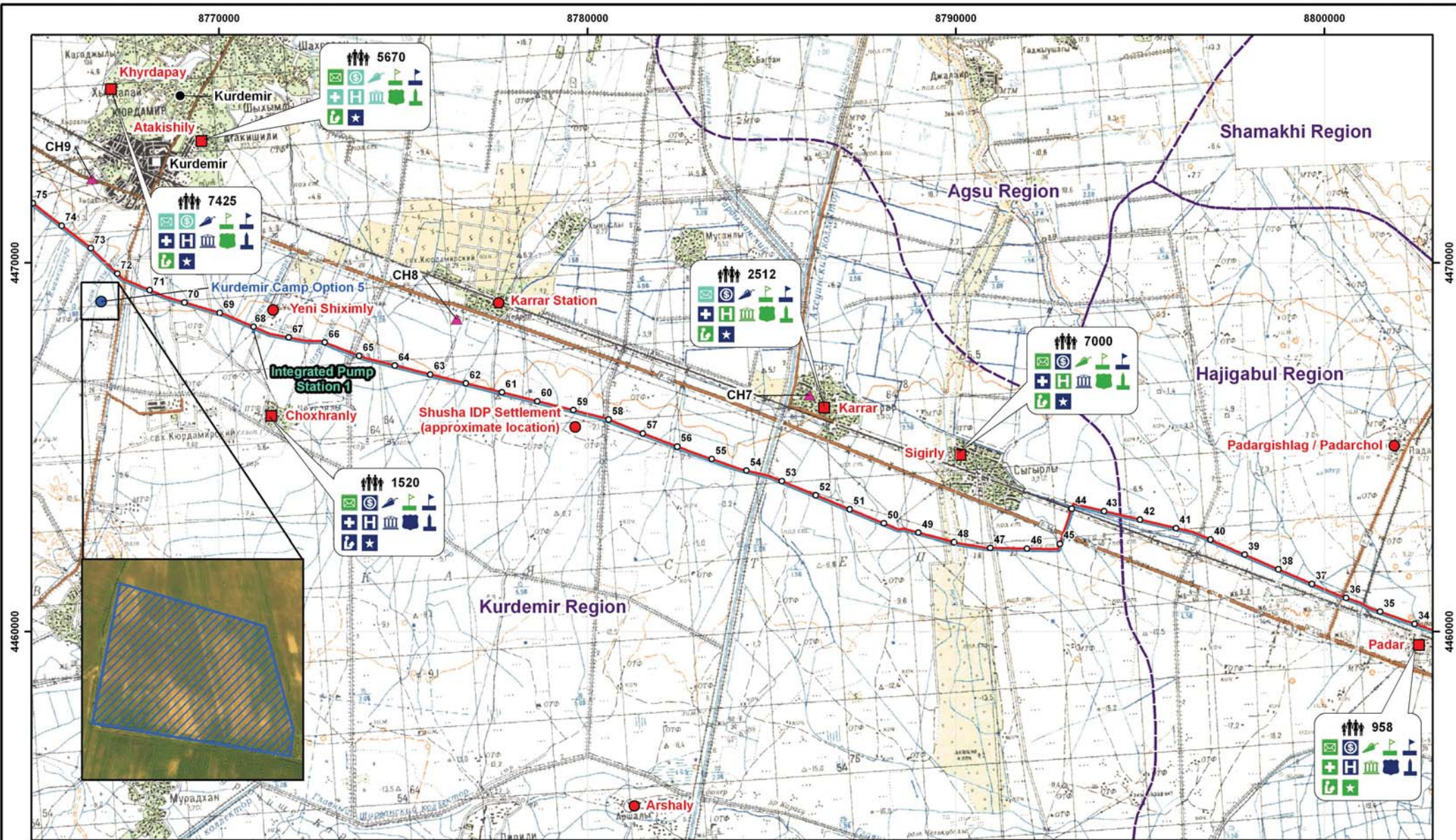
<b>Legend</b> Indicative SCPX Route SCP Route BTC Route Country Boundary Regional Boundary Temporary Facility Area SCPX KP		Settlement SCP Block Valve BTC Pump Station SCPX Block Valve SCPX Pigging Station PAC Interview Location PAC Location PAC Location (Unsurveyed)		<b>Facilities</b> Antique Cemetery Antique Settlement Medieval Cemetery Medieval Settlement Prehistoric Cemetery Prehistoric Settlement Other Cultural Heritage Cultural Heritage Site Reference No.		Population Post Office Bank Food Market Secondary School (includes primary & secondary education)		Primary School Clinic/Doctor's Surgery Hospital House of Culture Police Station Church/Mosque		Library Entertainment Facilities		<b>Facilities Status</b> Not Present within 2km of Town/Village Present within 2km of Town/Village Present within Town/Village	
---	--	--	--	--	--	---	--	--	--	-------------------------------------	--	---	--



ELLIPSOID: KRASSOVSKY 1940  
 PROJECTION: GAUSS-KRUGER  
 GEODETIC DATUM: POLKOVNIKOV 1942, ZONE 8  
 VERTICAL COORDINATE SYSTEM: KRONSTADT (BALTIC SEA) DATUM

### SCPX Project Azerbaijan

Figure A8-1:  
 Social & Cultural Heritage Constraints  
 Map 1 of 11



Rev	Date	Comment	By	CH	AP
02	02/05/2013	Route and camps updated	AJ	TN	KC
01	12/07/2012	Key updated	AJ	TN	KC
00	27/09/2012	First Draft	AJ	TN	KC

**Legend**

- Indicative SCPX Route
- SCP Route
- BTC Route
- Country Boundary
- Regional Boundary
- Temporary Facility Area
- SCPX KP

- Settlement
- SCP Block Valve
- BTC Pump Station
- SCPX Block Valve
- SCPX Pigging Station
- PAC Interview Location
- PAC Location
- PAC Location (Unsurveyed)

- + Antique Cemetery
- + Antique Settlement
- + Medieval Cemetery
- + Medieval Settlement
- + Prehistoric Cemetery
- + Prehistoric Settlement
- + Other Cultural Heritage
- + Cultural Heritage Site Reference No.

**Facilities**

- Population
- Post Office
- Bank
- Food Market
- Secondary School (includes primary & secondary education)
- Primary School
- Clinic/Doctor's Surgery
- Hospital
- House of Culture
- Police Station
- Church/Mosque
- Library
- Entertainment Facilities

**Facilities Status**

- Not Present within 2km of Town/Village
- Present within 2km of Town/Village
- Present within Town/Village



Original A3 Plot Scale 1:100,000

0 2.5 5 km

ELLIPSOID: KRASSOVSKY 1940  
 PROJECTION: GAUSS-KRUGER  
 GEODETIC DATUM: POLKOVNIKOV 1942 ZONE 8  
 VERTICAL COORDINATE SYSTEM: KRONSTADT (BALTIC SEA) DATUM

**SCPX Project Azerbaijan**  
 Figure A8-1:  
 Social & Cultural Heritage Constraints  
 Map 2 of 11

8740000

8750000

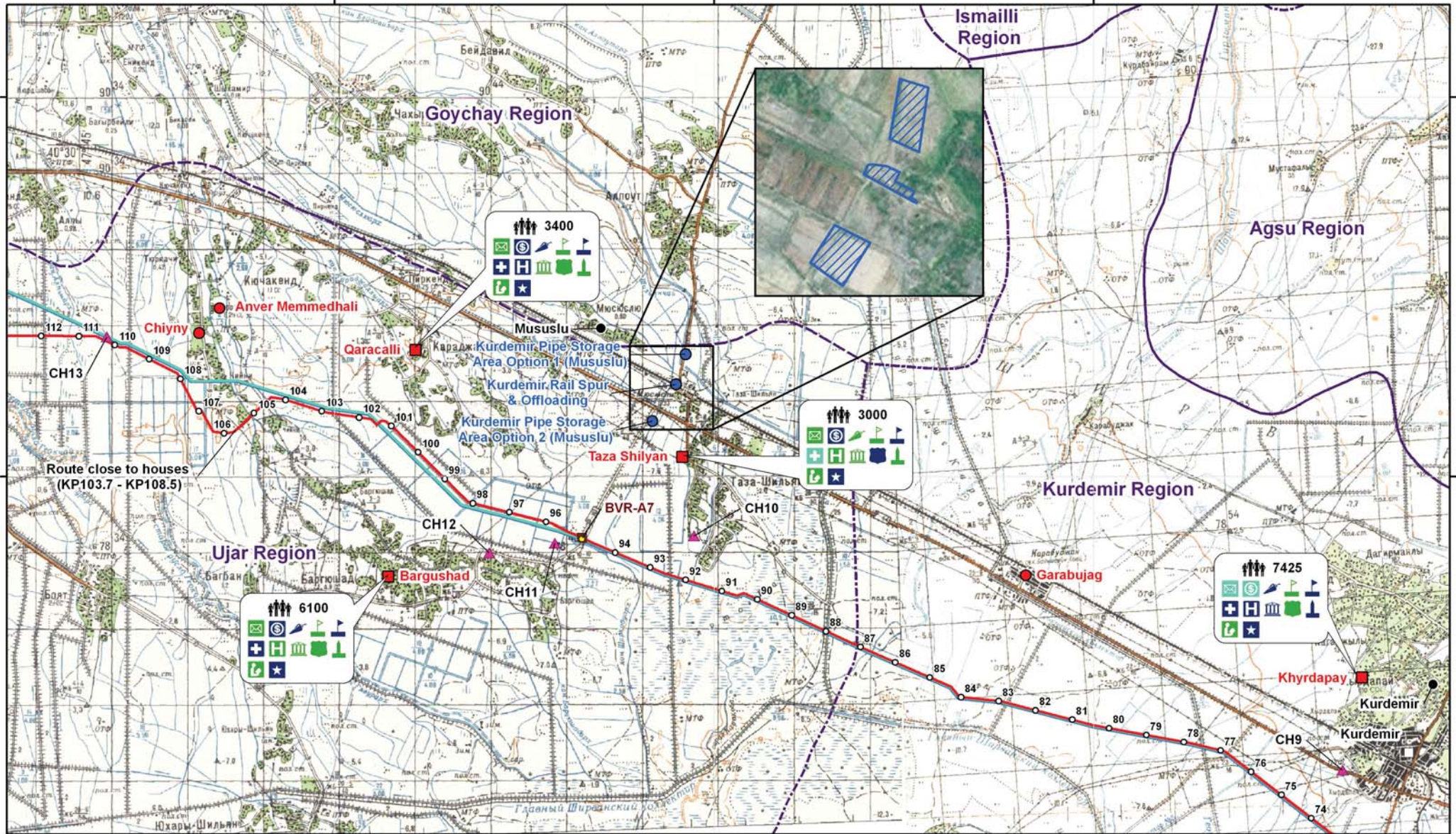
8760000

4490000

4480000

4490000

4480000



02	02/05/2013	Route and camps updated	AJ	TN	KC
01	12/07/2012	Key updated	AJ	TN	KC
00	27/09/2012	First Draft	AJ	TN	KC
Rev	Date	Comment	By	CH	AP

**Legend**

- Indicative SCPX Route
- SCP Route
- BTC Route
- Country Boundary
- Regional Boundary
- Temporary Facility Area
- SCPX KP
- PAC Location
- PAC Location (Unsurveyed)
- Settlement
- SCP Block Valve
- BTC Pump Station
- SCPX Block Valve
- SCPX Pigging Station
- PAC Interview Location

- + Antique Cemetery
- + Antique Settlement
- + Medieval Cemetery
- + Medieval Settlement
- + Prehistoric Cemetery
- + Prehistoric Settlement
- + Other Cultural Heritage
- + Cultural Heritage Site Reference No.

**Facilities**

- Population
- Post Office
- Bank
- Food Market
- Secondary School (includes primary & secondary education)
- Primary School
- Clinic/Doctor's Surgery
- Hospital
- House of Culture
- Police Station
- Church/Mosque
- Library
- Entertainment Facilities

**Facilities Status**

- Not Present within 2km of Town/Village
- Present within 2km of Town/Village
- Present within Town/Village



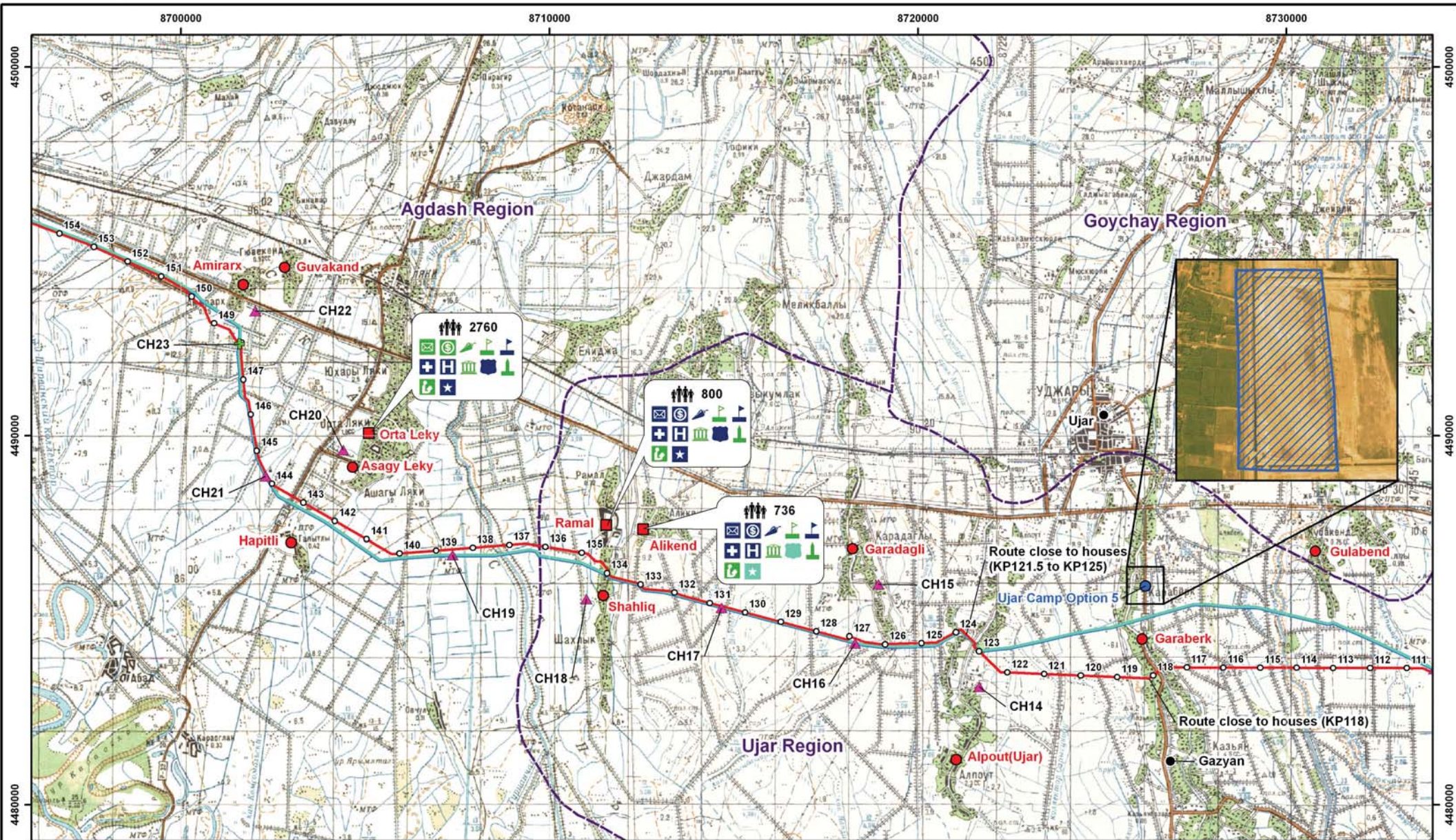
Original A3 Plot Scale 1:100,000

0 2.5 5 km

ELLIPSOID: KRASSOVSKY 1940  
 PROJECTION: GAUSS-KRUGER  
 GEODETIC DATUM: POLKOVNOV 1942, ZONE 8  
 VERTICAL COORDINATE SYSTEM: KRONSTADT (BALTIC SEA) DATUM

**SCPX Project Azerbaijan**

Figure A8-1:  
 Social & Cultural Heritage Constraints  
 Map 3 of 11



Rev	Date	Comment	By	CH	AP
02	02/05/2013	Route and camps updated	AJ	TN	KC
01	12/07/2012	Key updated	AJ	TN	KC
00	27/09/2012	First Draft	AJ	TN	KC

**Legend**

- Indicative SCPX Route
- SCP Route
- BTC Route
- Country Boundary
- Regional Boundary
- Temporary Facility Area
- SCPX KP
- PAC Location
- PAC Location (Unsurveyed)
- Settlement
- SCP Block Valve
- BTC Pump Station
- SCPX Block Valve
- SCPX Pigging Station
- PAC Interview Location
- Antique Cemetery
- Antique Settlement
- Medieval Cemetery
- Medieval Settlement
- Prehistoric Cemetery
- Prehistoric Settlement
- Other Cultural Heritage
- Cultural Heritage Site Reference No.

**Facilities**

- Population
- Post Office
- Bank
- Food Market
- Secondary School (includes primary & secondary education)
- Primary School
- Clinic/Doctor's Surgery
- Hospital
- House of Culture
- Police Station
- Church/Mosque
- Library
- Entertainment Facilities

**Facilities Status**

- Not Present within 2km of Town/Village
- Present within 2km of Town/Village
- Present within Town/Village



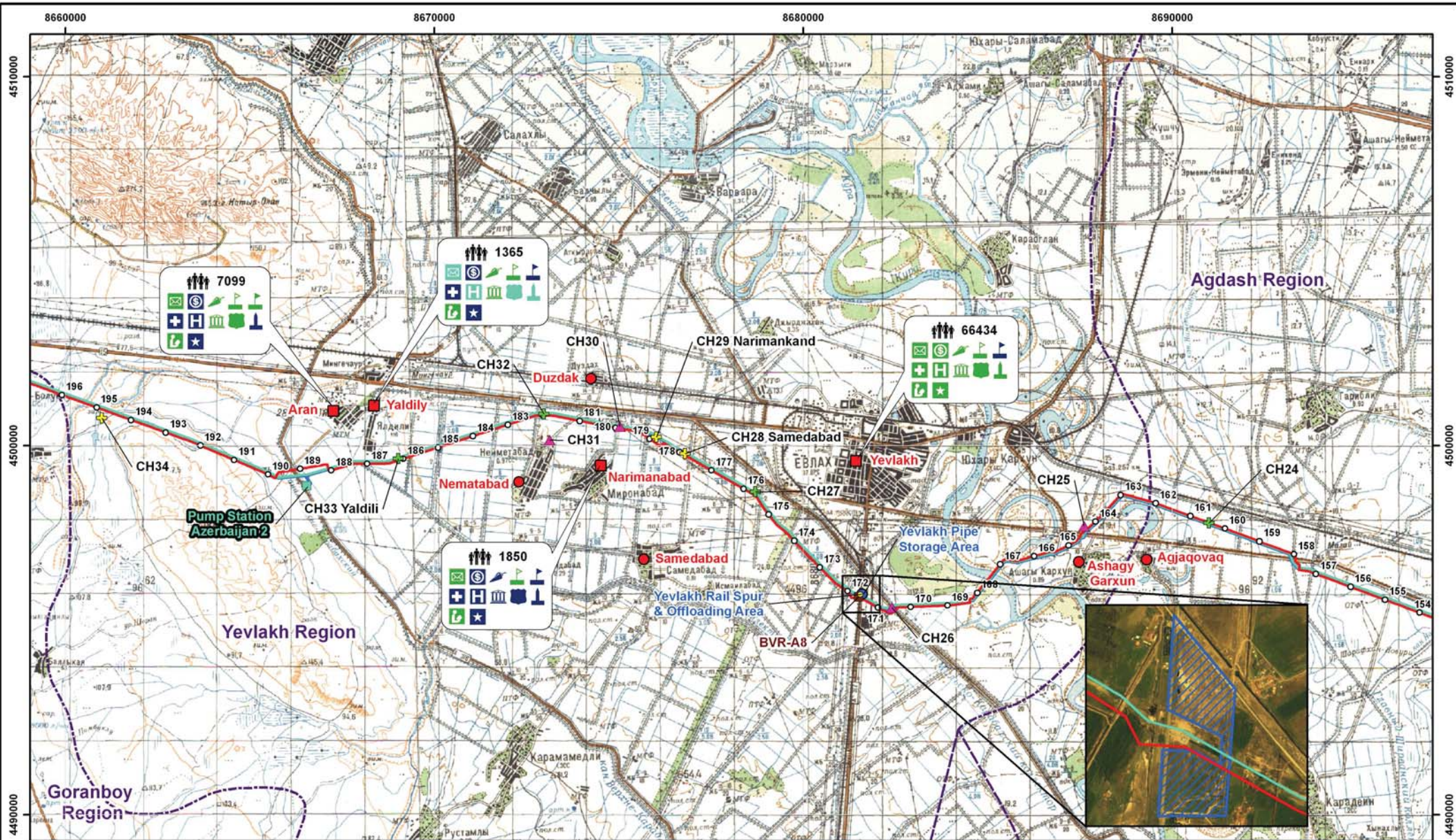
Original A3 Plot Scale 1:100,000

0 2.5 5 km

ELLIPSOID: KRASSOVSKY 1940  
 PROJECTION: GAUSS-KRUGER  
 GEODETIC DATUM: POLKOVNIKOV 1942, ZONE 8  
 VERTICAL COORDINATE SYSTEM: KRONSTADT (BALTIC SEA) DATUM

**SCPX Project Azerbaijan**

Figure A8-1:  
 Social & Cultural Heritage Constraints  
 Map 4 of 11



Rev	Date	Comment	By	CH	AP
02	02/05/2013	Route and camps updated	AJ	TN	KC
01	12/07/2012	Key updated	AJ	TN	KC
00	27/09/2012	First Draft	AJ	TN	KC

**Legend**

- Indicative SCPX Route
- SCP Route
- BTC Route
- Country Boundary
- Regional Boundary
- Temporary Facility Area
- SCPX KP
- Settlement
- SCP Block Valve
- BTC Pump Station
- SCPX Block Valve
- SCPX Pigging Station
- PAC Interview Location
- PAC Location
- PAC Location (Unsurveyed)

- + Antique Cemetery
- + Antique Settlement
- + Medieval Cemetery
- + Medieval Settlement
- + Prehistoric Cemetery
- + Prehistoric Settlement
- + Other Cultural Heritage
- + Cultural Heritage Site Reference No.

- Facilities**
- + Population
  - + Post Office
  - + Bank
  - + Food Market
  - + Secondary School (includes primary & secondary education)
  - + Primary School
  - + Clinic/Doctor's Surgery
  - + Hospital
  - + House of Culture
  - + Police Station
  - + Church/Mosque
  - + Library
  - + Entertainment Facilities

- Facilities Status**
- Not Present within 2km of Town/Village
  - Present within 2km of Town/Village
  - Present within Town/Village



Original A3 Plot Scale 1:100,000

0 2.5 5 km

ELLIPSOID: KRASSOVSKY 1940  
 PROJECTION: GAUSS-KRUGER  
 GEODETIC DATUM: POLKOVOD-1942, ZONE 8  
 VERTICAL COORDINATE SYSTEM: KRONSTADT (BALTIC SEA) DATUM

**SCPX Project Azerbaijan**

Figure A8-1:  
 Social & Cultural Heritage Constraints  
 Map 5 of 11