

- LEGEND**
- Proposed Development Site Boundary
  - Local Authority District
  - Stockton-on-Tees Local Plan**
  - SD3, SD4 & SD5 Limits to Development
  - SD4 & EG4 Specialist Employment Allocations
  - SD4 EG4 Specialist Use Locations
  - SD4 & EG1 General Employment Allocations
  - SD4 & EG1 General Employment Locations
  - SD3, SD4 & SD5 Countryside
  - SD5 & ENV5 Internationally Designated Sites (SPA and Ramsar)
  - SD5 & ENV5 Nationally Designated Sites (SSSI)

- NOTES**
- 1: Reproduced from Ordnance Survey digital map data © Crown copyright 2023. All rights reserved. Licence number 0100031673.
  - 2: Contains Ordnance Survey Data © Crown Copyright and database right 2023.
  - 3: Local Plan data obtained from Stockton-on-Tees Brough Council, January 2019.

**ISSUE PURPOSE**  
PEI Report

**PROJECT NUMBER**  
60689030

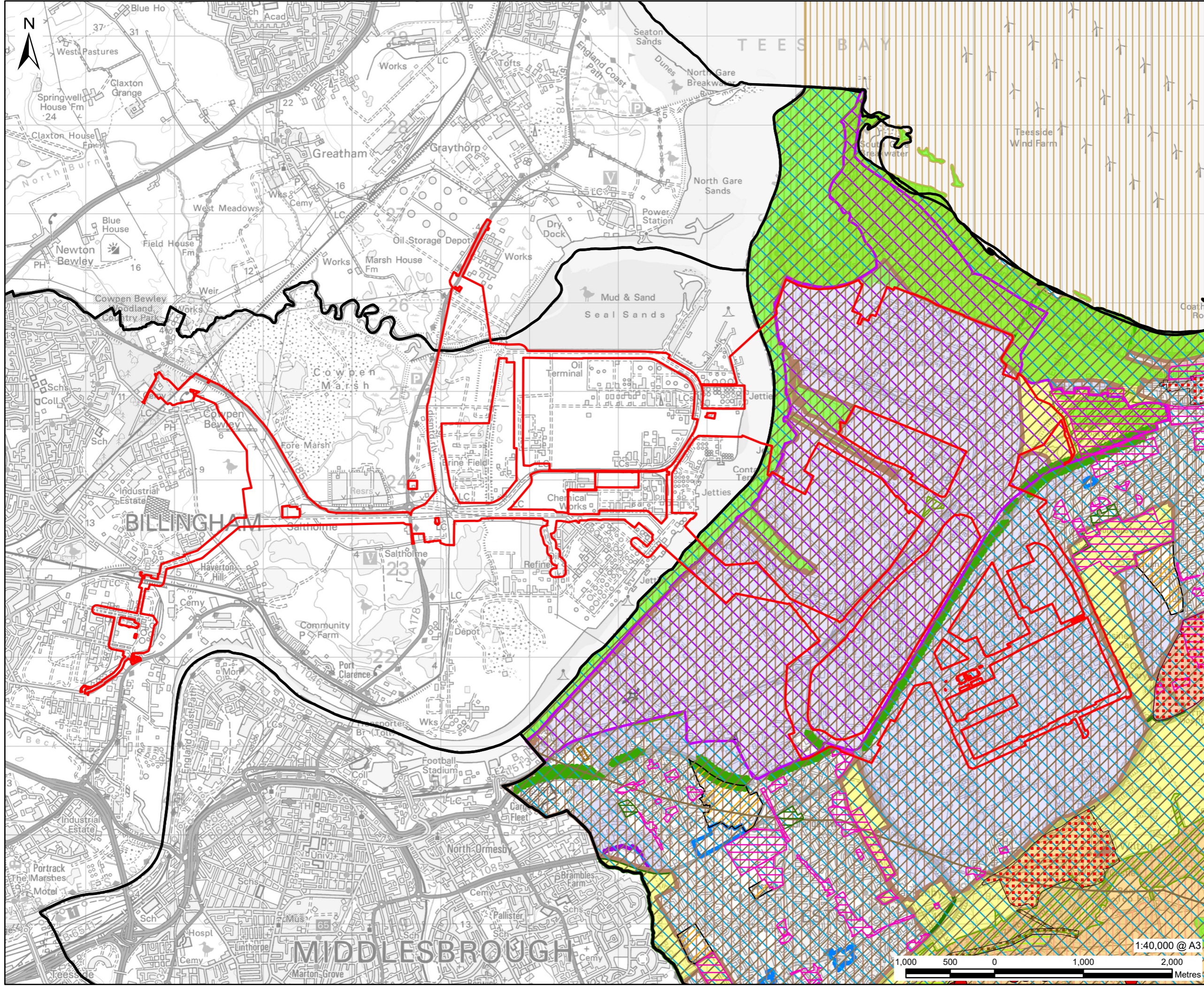
**FIGURE TITLE**  
Stockton-on-Tees Local Plan

**FIGURE NUMBER**  
Figure 7-1a

1:40,000 @ A3



This drawing has been prepared for the use of AECOM's client. It may not be used, modified, reproduced or relied upon by third parties, except as agreed by AECOM or as required by law. AECOM accepts no responsibility, and denies any liability whatsoever, to any party that uses or relies on this drawing without AECOM's express written consent. Do not scale this document. All measurements must be obtained from the stated dimensions.



- LEGEND**
- Proposed Development Site
  - Boundary
  - Redcar and Cleveland Local Plan**
  - HE 3 Scheduled Monuments
  - Boundary of Redcar & Cleveland Local Plan
  - ED 1 Protecting and Enhancing the Borough's Centres
  - ED 2 Cleveland Retail Park
  - ED 6 Protecting Employment Areas
  - ED 10 South Tees Motorsports Park
  - H 3 Housing Allocations
  - H 7 Gypsy, Traveller and Travelling Showpeople Accommodation
  - HE 1 Conservation Areas
  - LS 4, ED 6 South Tees Development Corporation
  - N 1 Historic Landscape - Eston Hills
  - N 1 Restoration Landscape Areas
  - N 1 Sensitive Landscape Areas
  - N 2 Green Wedges
  - N 2 Strategic Landscape Areas
  - N 3 Primary Open Spaces
  - N 3 Secondary Open Spaces
  - N 4 6km Special Protection Areas (SPA) Buffer Zone
  - N 4 Local Geological Sites (LGS)
  - N 4 Local Nature Reserves (LNR)
  - N 4 Local Wildlife Sites (LWS)
  - N 4 Sites of Special Scientific Interest (SSSI)
  - N 4 Special Protection Areas (SPA)
  - N 4 Wildlife Corridors
  - REG 1 Coatham, REG 2 Kirkleatham, REG 3 Skelton
  - SD 3 Development Limits
  - SD 6 30km wind farm safeguarding area for Durham Tees Valley Airport
  - TA 3 Extension to Dockside Road

- NOTES**
- 1: Reproduced from Ordnance Survey digital map data © Crown copyright 2023. All rights reserved. Licence number 0100031673.
  - 2: Local Plan data obtained from Redcar and Cleveland Brough Council, May 2018.

**ISSUE PURPOSE**  
PEI Report

**PROJECT NUMBER**  
60689030

**FIGURE TITLE**  
Redcar and Cleveland Local Plan

**FIGURE NUMBER**  
Figure 7-1b

This drawing has been prepared for the use of AECOM's client. It may not be used, modified, reproduced or relied upon by third parties, except as agreed by AECOM or as required by law. AECOM accepts no responsibility, and denies any liability whatsoever, to any party that uses or relies on this drawing without AECOM's express written consent. Do not scale this document. All measurements must be obtained from the stated dimensions.