

AECOM

PROJECT
H2Teesside DCO

APPLICANT
H2 Teesside Limited

CONSULTANT
AECOM Limited
100 Embankment,
Cathedral Approach,
Manchester, M3 7FB
www.aecom.com

- LEGEND**
- Proposed Development Site Boundary
 - Main Site
 - Ramsar
 - Site of Special Scientific Interest (SSSI)
 - National Nature Reserve (NNR)

NOTES

- 1: Reproduced from Ordnance Survey digital map data © Crown copyright 2023. All rights reserved. Licence number 0100031673.
- 2: © Natural England copyright. Contains Ordnance Survey data © Crown Copyright and database right 2023.

ISSUE PURPOSE
PEI Report

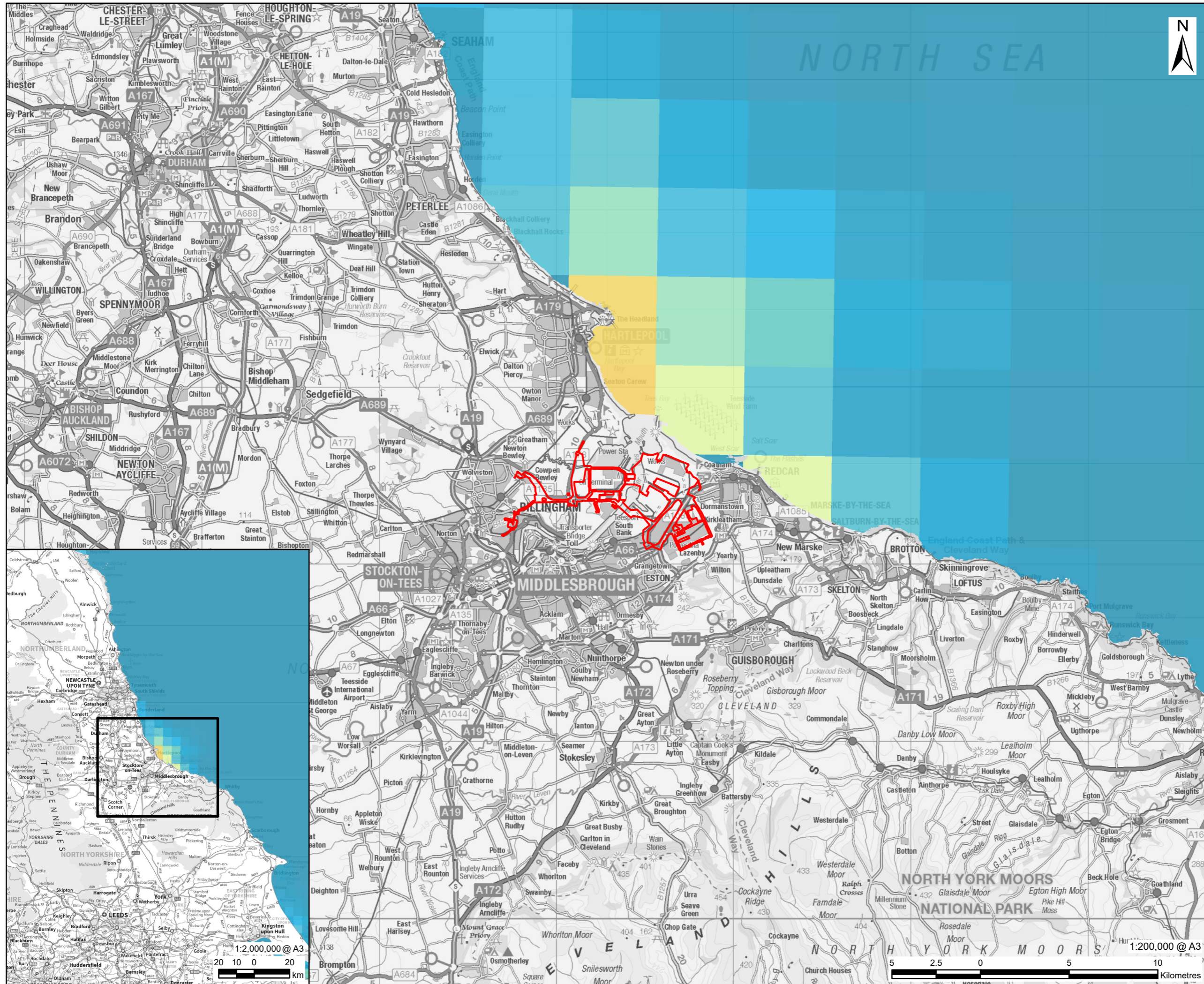
PROJECT NUMBER
60689030

FIGURE TITLE
Designated Sites with Marine Ecological Features

FIGURE NUMBER
Figure 14-2



This drawing has been prepared for the use of AECOM's client. It may not be used, modified, reproduced or relied upon by third parties, except as agreed by AECOM or as required by law. AECOM accepts no responsibility, and denies any liability whatsoever, to any party that uses or relies on this drawing without AECOM's express written consent. Do not scale this document. All measurements must be obtained from the stated dimensions.



AECOM

PROJECT
H2 Teesside DCO

APPLICANT
H2 Teesside Limited

CONSULTANT
AECOM Limited
100 Embankment,
Cathedral Approach,
Manchester, M3 7FB
www.aecom.com

LEGEND

- Proposed Development Site Boundary
- Harbour Seals**
- Percentage of at-sea population**
- High : 0.1
- Low : 0

NOTES

- 1: Reproduced from Ordnance Survey digital map data © Crown copyright 2023. All rights reserved. Licence number 0100031673.
- 2: Carter et al., 2020.

At-Sea Density Maps for Grey and Harbour Seals in the British Isles (2020)
Attribution 4.0 International (CC BY 4.0). Available online at <https://doi.org/10.17630/dcebb865-3177-4498-ac9d-13a0f10b74e1>

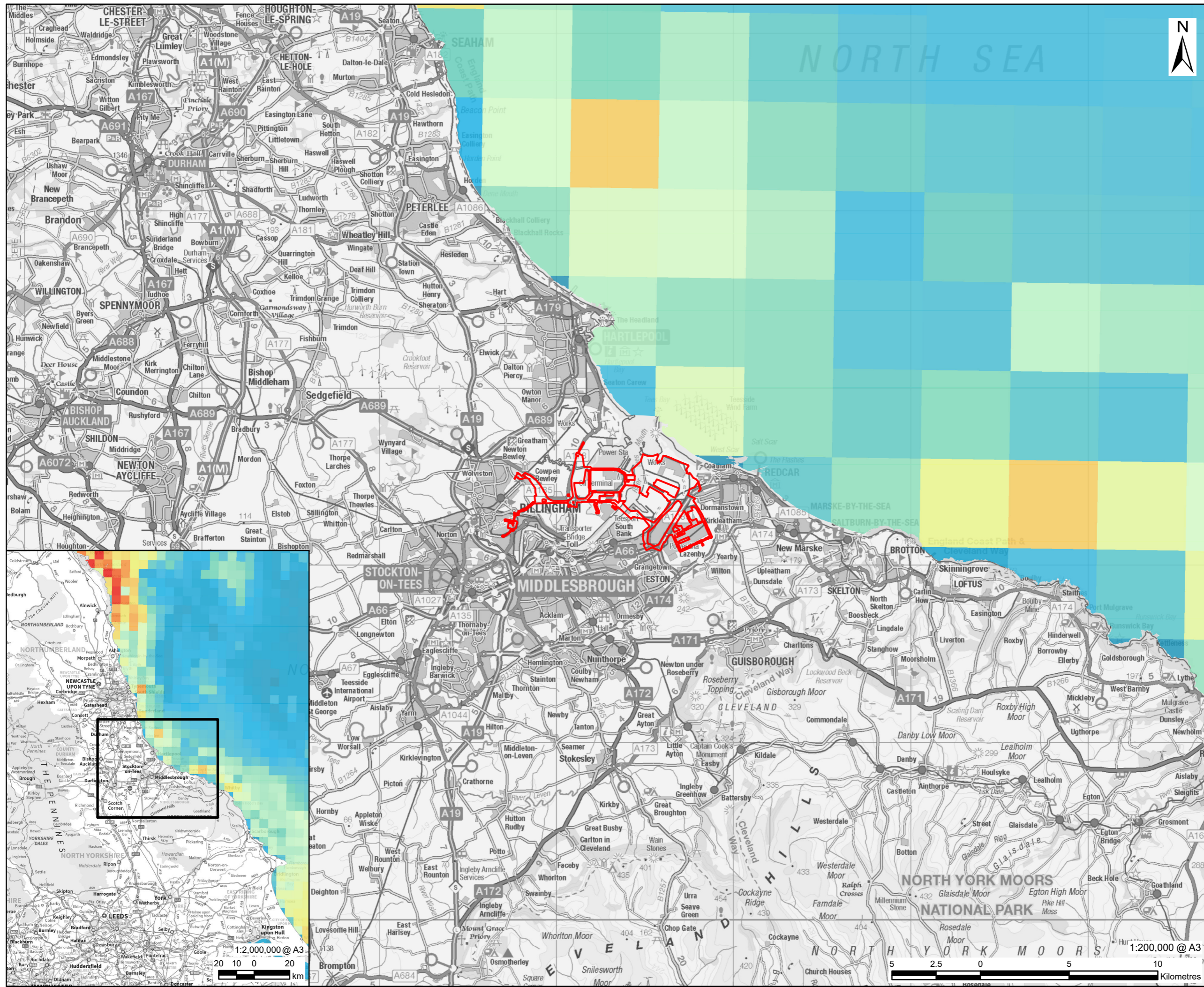
ISSUE PURPOSE
PEI Report

PROJECT NUMBER
60689030

FIGURE TITLE
Mean percentage of at-sea population (estimated to be present in each 5 km x 5 km grid cell at any one time) of harbour seals from haulouts in the British Isles (Source: Carter et al., 2020)

FIGURE NUMBER
Figure 14-4

This drawing has been prepared for the use of AECOM's client. It may not be used, modified, reproduced or relied upon by third parties, except as agreed by AECOM or as required by law. AECOM accepts no responsibility, and denies any liability whatsoever, to any party that uses or relies on this drawing without AECOM's express written consent. Do not scale this document. All measurements must be obtained from the stated dimensions.



PROJECT
H2 Teesside DCO

APPLICANT
H2 Teesside Limited

CONSULTANT
AECOM Limited
100 Embankment,
Cathedral Approach,
Manchester, M3 7FB
www.aecom.com

LEGEND

- Proposed Development Site Boundary
- Grey Seals
- Percentage of at-sea population**
- High : 0.1
- Low : 0

NOTES

- 1: Reproduced from Ordnance Survey digital map data © Crown copyright 2023. All rights reserved. Licence number 0100031673.
- 2: Carter et al., 2020.

At-Sea Density Maps for Grey and Harbour Seals in the British Isles (2020)
Attribution 4.0 International (CC BY 4.0). Available online at <https://doi.org/10.17630/dceb865-3177-4498-ac9d-13a0f10b74e1>

ISSUE PURPOSE
PEI Report

PROJECT NUMBER
60689030

FIGURE TITLE
Mean percentage of at-sea population (estimated to be present in each 5 km x 5 km grid cell at any one time) of grey seals from haulouts in the British Isles (Source: Carter et al., 2020)

FIGURE NUMBER
Figure 14-5

This drawing has been prepared for the use of AECOM's client. It may not be used, modified, reproduced or relied upon by third parties, except as signed by AECOM or as required by law. AECOM accepts no responsibility, and denies any liability whatsoever, to any party that uses or relies on this drawing without AECOM's express written consent. Do not scale this document. All measurements must be obtained from the stated dimensions.