

- LEGEND**
- Proposed Development Site Boundary
 - Main Site
 - Air Quality (Operation) - 10 km from Main Site
 - Landscape and Visual Amenity - 10 km from the Main Site and 2 km from the Proposed Development Site
 - Cultural Heritage (Designated Assets) - 5 km from Proposed Development Site Boundary
 - Marine Ecology - 10 km from Proposed Development Site Boundary
 - Ecology (including Aquatic Ecology) and Ornithology - International and National Nature Conservation Designations - 15 km from Proposed Development Site Boundary

NOTES
1: Contains Ordnance Survey Data © Crown Copyright and database right 2023.

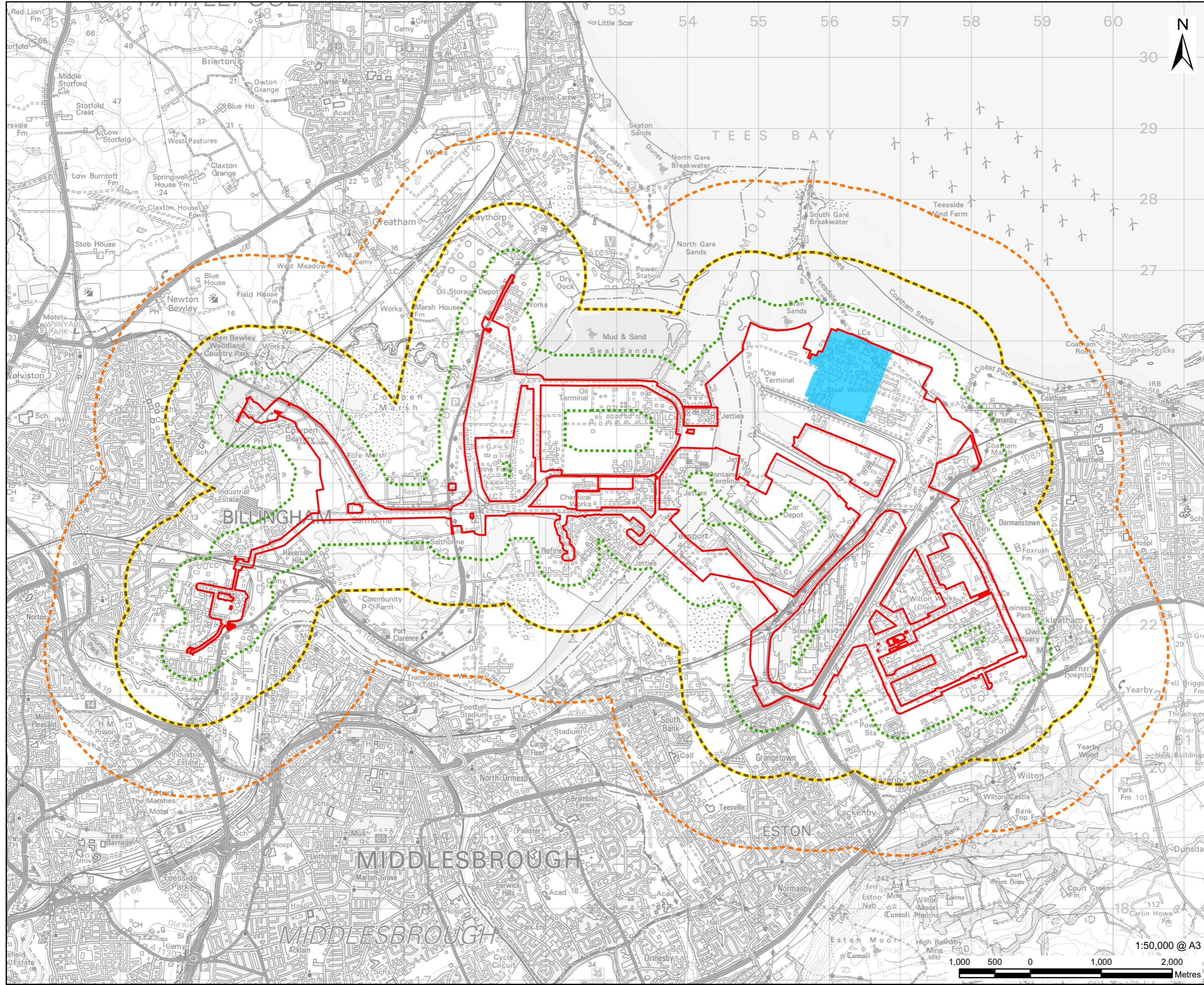
ISSUE PURPOSE
PEI Report

PROJECT NUMBER
60689030

FIGURE TITLE
Zones of Influence for Cumulative Effects Assessment

FIGURE NUMBER
Figure 23-1 (Sheet 1 of 4)

This drawing has been prepared for the use of AECOM's client. It may not be used, modified, reproduced or relied upon by third parties, except as agreed by AECOM or as required by law. AECOM accepts no responsibility, and denies any liability whatsoever, to any party that uses or relies on this drawing without AECOM's express written consent. Do not scale this document. All measurements must be obtained from the stated dimensions.



- LEGEND**
- Proposed Development Site Boundary
 - Main Site
 - Air Quality (Construction) - 350 m from Proposed Development Site Boundary, 500 m for Site Entrances
 - Geology, Hydrogeology and Contaminated Land - 1 km from Proposed Development Site Boundary
 - Surface Water, Flood Risk and Water Resources and Cultural Heritage (Non-Designated Assets) - 1 km from Proposed Development Site Boundary
 - Ecology (including Aquatic Ecological and Ornithology (all other Ecological and Ornithological Effects)) - 2 km from Proposed Development Site Boundary

NOTES
1: Reproduced from Ordnance Survey digital map data © Crown copyright 2023. All rights reserved. Licence number 0100031673.

ISSUE PURPOSE
PEI Report

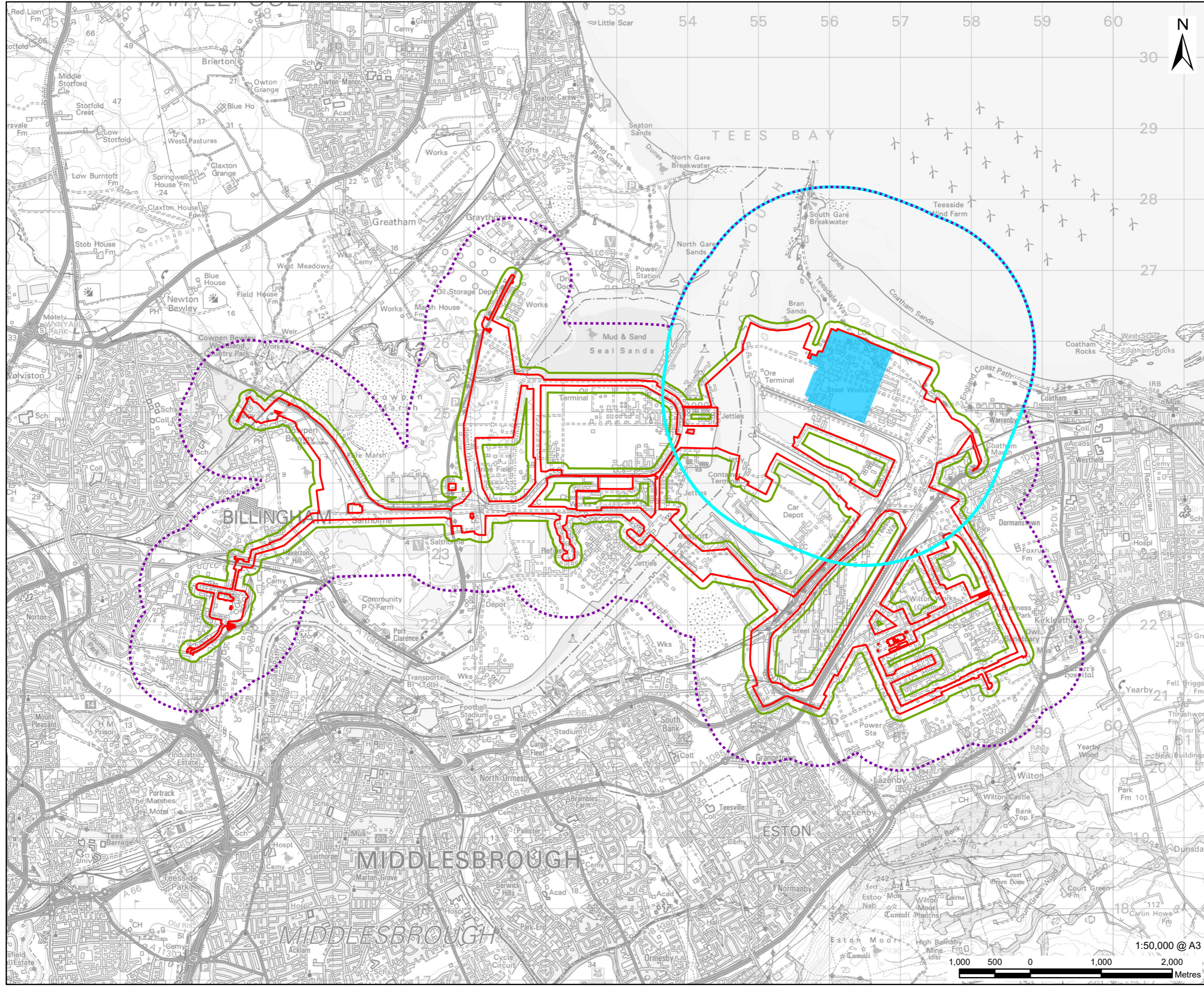
PROJECT NUMBER
60689030

FIGURE TITLE
Zones of Influence for Cumulative Effects Assessment

FIGURE NUMBER
Figure 23-1 (Sheet 2 of 4)



This drawing has been prepared for the use of AECOM's client. It may not be used, modified, reproduced or relied upon by third parties, except as agreed by AECOM or as required by law. AECOM accepts no responsibility, and denies any liability whatsoever, to any party that uses or relies on this drawing without AECOM's express written consent. Do not scale this document. All measurements must be obtained from the stated dimensions.



- LEGEND**
- Proposed Development Site Boundary
 - Main Site
 - Noise (Construction) - 2 km from Main Site and 800 m from Proposed Development Site Boundary where this extends beyond the 2km from Main Site
 - Noise (Operation) - 2 km from Main Site
 - Vibration (Construction) - 100 m from Proposed Development Site Boundary

NOTES

1: Reproduced from Ordnance Survey digital map data © Crown copyright 2023. All rights reserved. Licence number 0100031673.

ISSUE PURPOSE
PEI Report

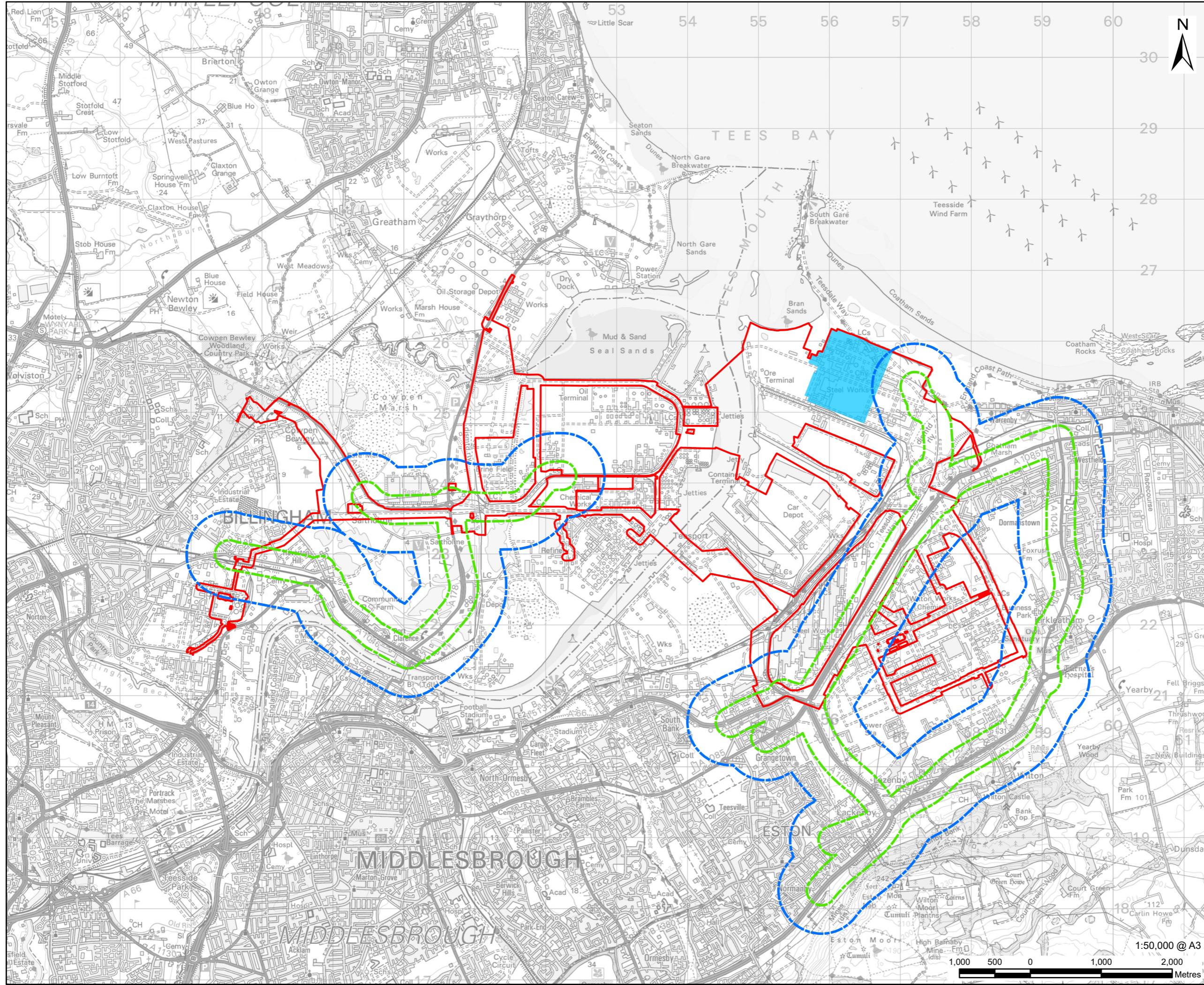
PROJECT NUMBER
60689030

FIGURE TITLE
Zones of Influence for Cumulative Effects Assessment

FIGURE NUMBER
Figure 23-1 (Sheet 3 of 4)



This drawing has been prepared for the use of AECOM's client. It may not be used, modified, reproduced or relied upon by third parties, except as agreed by AECOM or as required by law. AECOM accepts no responsibility, and denies any liability whatsoever, to any party that uses or relies on this drawing without AECOM's express written consent. Do not scale this document. All measurements must be obtained from the stated dimensions.



PROJECT
H2Teesside DCO

APPLICANT
H2 Teesside Limited

CONSULTANT
AECOM Limited
100 Embankment,
Cathedral Approach,
Manchester, M3 7FB
www.aecom.com

- LEGEND**
- Proposed Development Site Boundary
 - Main Site
 - Air Quality (Traffic-related Air Quality) - 200 m from affected roads
 - Noise (Traffic-related Noise) - 600 m from affected roads

NOTES
1: Reproduced from Ordnance Survey digital map data © Crown copyright 2023. All rights reserved. Licence number 0100031673.

ISSUE PURPOSE
PEI Report

PROJECT NUMBER
60689030

FIGURE TITLE
Zones of Influence for Cumulative Effects Assessment

FIGURE NUMBER
Figure 23-1 (Sheet 4 of 4)

1:50,000 @ A3



This drawing has been prepared for the use of AECOM's client. It may not be used, modified, reproduced or relied upon by third parties, except as agreed by AECOM or as required by law. AECOM accepts no responsibility, and denies any liability whatsoever, to any party that uses or relies on this drawing without AECOM's express written consent. Do not scale this document. All measurements must be obtained from the stated dimensions.

